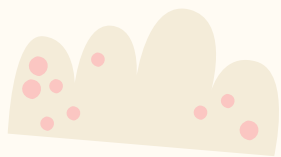


# Virtual Chess for Beginners

Seventh Day (2:00- 3:30PM)



# Table of contents

01

## Ice Breaker

Garry Kasparov answers  
questions- 4 min.



02

## Rating Sheet

Current leaders- 3 min.

03

## Lecture & Practice

Back-Rank Checkmate- (30  
min.)

04

## Tournament

(45 min.)

# Ice Breaker

Continue from 4:08



# Rating Sheet

- Updated ratings after our fifth tournament!

- Our top 5 leaders are...

- Jomart79 (1689)**
- math71 (1678)**
- K123kbzhhd (1671)**
- JK1084 (1678)**
- Vaibob21 (1669)**
- Jk1084 (1662)**

K123kbzhhd	2269			1860	NS	1685	1671
TriakshaS	1443			1652	1684	1534	1550
JK1084	2009			1957	1695	1678	1662
Elleni123	1626			1670	1640	1535	1556
chess-jazzmine	1911			1750	1554	1497	1464
Leafeon8910	1859			1671	1695	1639	1629
Kuttythangam	1563			1330	1376	NS	NS
math71	1639			1683	1697	1673	1678
elsa1921	1649			NS	NS	NS	NS
schandramouli1	1508			1386	NS	1631	1529
VibhaSanu	1614			1538	1593	1600	1595
Vihaansanu	1458			1317	1224	1558	1562
sas2014	1444			1470	1502	1458	1402
liufangfei	1164			1200	1196	1207	NS
zoe_nothing	1610			NS	NS	NS	NS
Pihu1986	1572			1524	1581	1624	1639
inlandtaipan729	1476			1431	1431	1462	1453
ishaG	1460			NS	1322	1095	1218
Sebastian_Lui55	1169			1248	1554	1627	1625
ethchen628	1258			NS	NS	NS	NS
sidmouli	1123			948	NS	1002	1213
esperex	1500			NS	1535	1270	1153
notify123	1346			NS	NS	NS	NS
Wanderwoman2021	1132			NS	NS	NS	NS
Blebietomato	1258			NS	NS	NS	NS
jesse0116	1258			NS	NS	NS	NS
yueen123	965			722	NS	NS	NS
mas622	1071			1107	1260	1398	1354
greenroseblue	1032			1151	NS	NS	NS
<b>Vaibob21</b>	NS			1648	1855	1739	1669
jomart79	NS			1539	1626	NS	1689
anishyenuguthala	NS			1514	1234	1235	NS
mousedroid	NS			1226	1310	1340	1427
Ninanina321	NS			NS	990	NS	843
Harikeshram	NS			NS	1260	NS	NS
liuyujia	NS			NS	984	1158	1019
ChessGirl156	NS			NS	NS	NS	1805

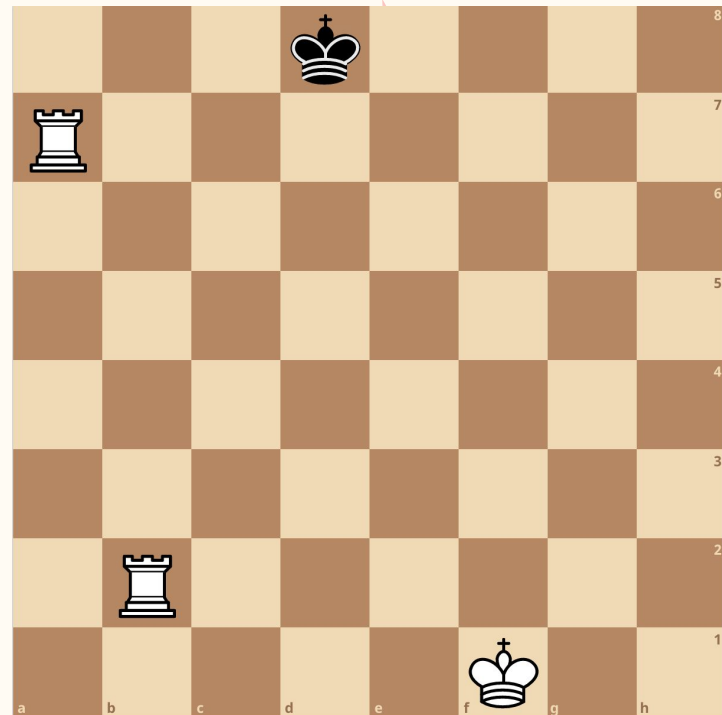
# Lecture- ladder checkmate



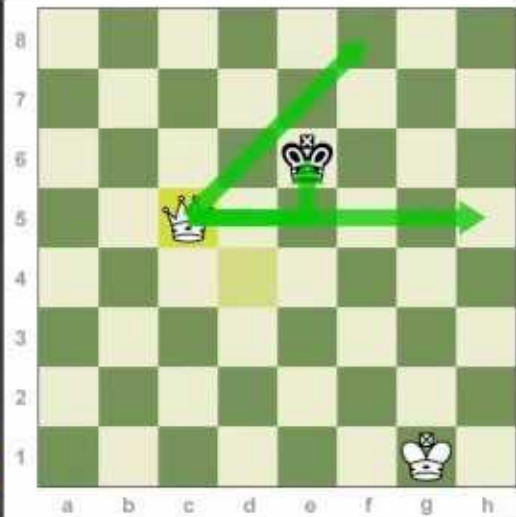
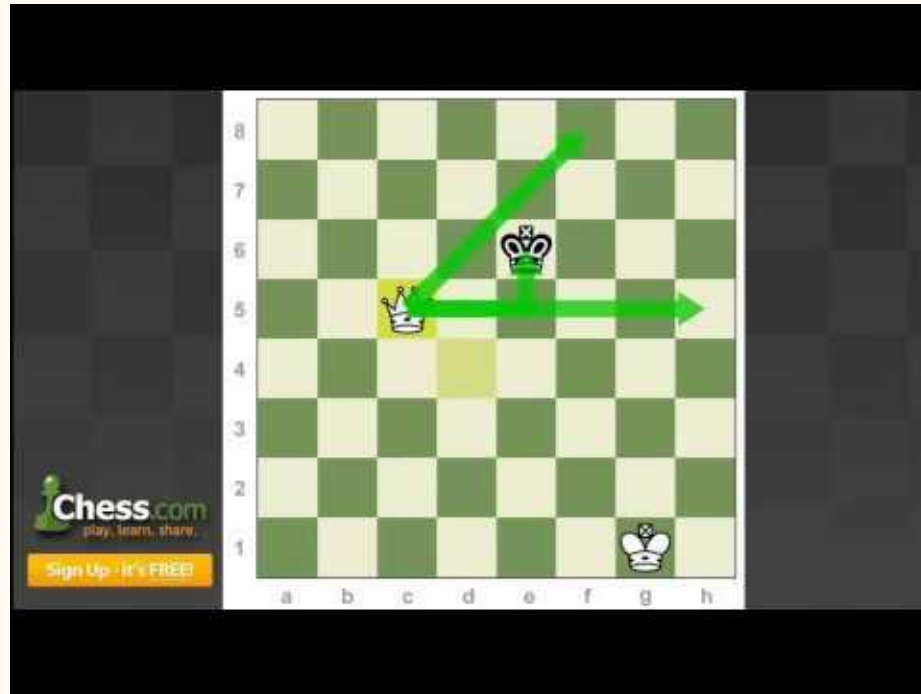
# Practice

Text answers in Zoom chat either to everyone or privately to Hwan

1. How can White checkmate the Black king? (move piece to this square)
2. What is Black's best way to stop the checkmate in one? (move piece to this square)



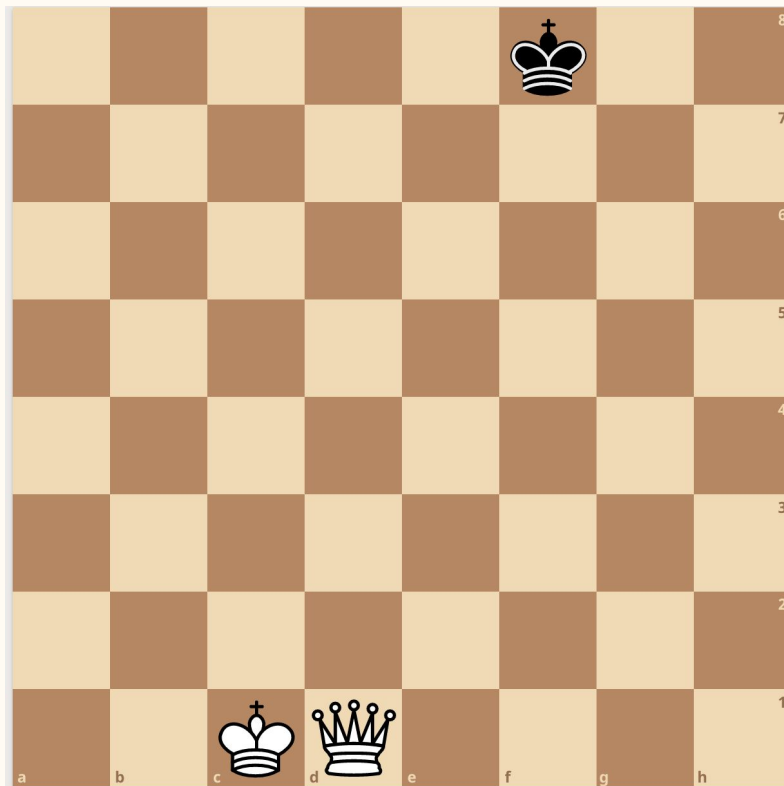
# Checkmate with queen and king



# Practice

Text answers in Zoom chat either to everyone or privately to Hwan

1. What move should white play so then the queen is a knight's distance away from the king?
2. Should you check the king?





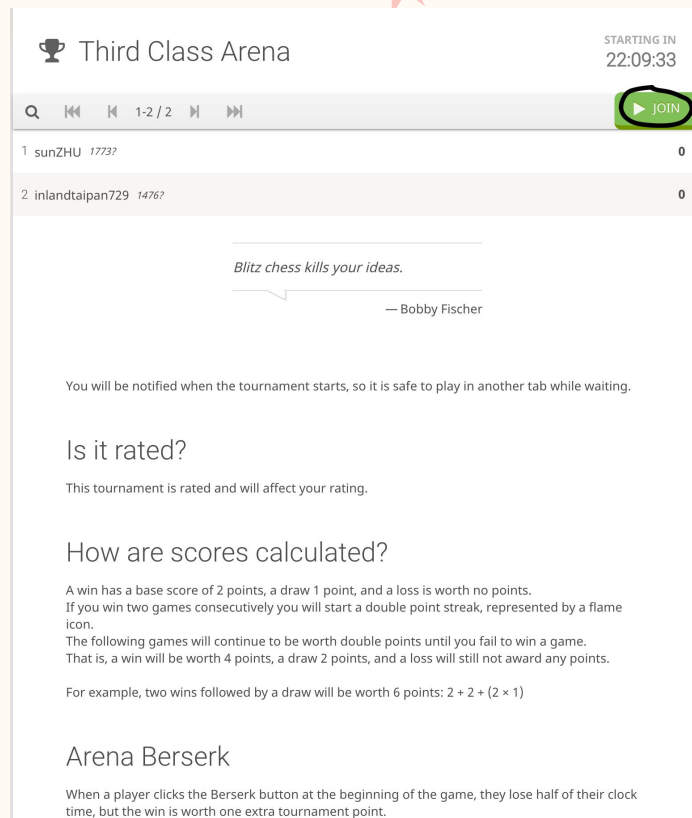
# Chess Tourney

We already sent an email to join our chess tourney beforehand, but in case people don't have the link, it is <https://lichess.org/tournament/KpjrUu2>

**Password: seventreesbranch**

**Note: ratings will be updated on rating sheet after this tournament**

This Link will not work if you did not join our team. The majority of our group already joined our team, but if you have not please text privately to Hwan.



Third Class Arena STARTING IN 22:09:33

1 sunZHU 1773? 0

2 inlandtaipan729 1476? 0

*Blitz chess kills your ideas.*

— Bobby Fischer

You will be notified when the tournament starts, so it is safe to play in another tab while waiting.

Is it rated?

This tournament is rated and will affect your rating.

How are scores calculated?

A win has a base score of 2 points, a draw 1 point, and a loss is worth no points. If you win two games consecutively you will start a double point streak, represented by a flame icon. The following games will continue to be worth double points until you fail to win a game. That is, a win will be worth 4 points, a draw 2 points, and a loss will still not award any points.

For example, two wins followed by a draw will be worth 6 points:  $2 + 2 + (2 \times 1)$

Arena Berserk

When a player clicks the Berserk button at the beginning of the game, they lose half of their clock time, but the win is worth one extra tournament point.



# Questions

**Q:** My opponent (the person I am playing against) is not moving. What should I do?

**A:** Just wait patiently and after a few minutes, the system will automatically give you the win.

**Q:** I finished my game, but the next game is not starting. What should I do?

**A:** The system is taking some time finding another player to play against. Wait a couple of minutes and eventually the system will find a player.

**Q:** What do I do when I have a question during our tournament?

**A:** To minimize any distractions for other players, please text your question in the zoom chat privately to Hwan. I will try to answer them for you.

