

# Virtual Chess for Beginners

Sixth Day (2:00–3:30PM)

# Agenda

01

## Icebreaker

Garry Kasparov  
answers  
questions- (4 min.)

02

## Rating Sheet

Current Leaders-  
(3 min.)

05

## Tournament

(45 min.)

03

## Lecture

Back Rank Mate (7  
min.)

04

## Practice

Puzzles &  
questions (20 min.)

# Ice Breaker

Stop at 4:08.



# Rating Sheet

- Updated ratings after our third tournament!
  - Our top 5 leaders are...

- Vaibob21 (1739)**
- K123kbzhhd (1685)**
- JK1084 (1678)**
- math71 (1673)**
- Leafeon8910 (1639)**

Lichess Username	Rating after 1st class (July 6th)	Rating after 2nd class (July 8th)	Rating after 3rd class (July 13th)	Rating after 4th class (July 15th)	Rating after 5th class (July 20th)
K123kbzhhd	2269		1860	NS	1685
TriakshaS	1443		1652	1684	1534
JK1084	2009		1957	1695	1678
Elleni123	1626		1670	1640	1535
chess-jazzmine	1911		1750	1554	1497
Leafeon8910	1859		1671	1695	1639
Kuttythangam	1563		1330	1376	NS
math71	1639		1583	1697	1673
elsa1921	1649		NS	NS	NS
schandramouli1	1508		1366	NS	1631
VibhaSanu	1614		1538	1593	1600
Vihaansanu	1458		1317	1224	1558
sas2014	1444		1470	1502	1458
liufangfei	1164		1200	1196	1207
zoe_nothing	1610		NS	NS	NS
Pihu1986	1572		1524	1581	1624
inlandtaipan729	1476		1431	1431	1462
ishaG	1460		NS	1322	1095
Sebastian_Lui55	1169		1248	1554	1627
ethchen628	1258		NS	NS	NS
sidmoull	1123		948	NS	1002
esperez	1500		NS	1535	1270
notify123	1346		NS	NS	NS
Wanderwoman2021	1132		NS	NS	NS
Blebletomato	1258		NS	NS	NS
jesse0116	1258		NS	NS	NS
yueen123	965		722	NS	NS
mas622	1071		1107	1260	1398
greenroseblue	1032		1151	NS	NS
<b>Vaibob21</b>	NS		1648	<b>1855</b>	<b>1739</b>
jomart79	NS		1539	1626	NS
anishyenuguthala	NS		1514	1234	1235
mousedroid	NS		1226	1310	1340
Ninanina321	NS		NS	990	NS
Harikeshram	NS		NS	1260	NS
liuyujia	NS		NS	984	1158

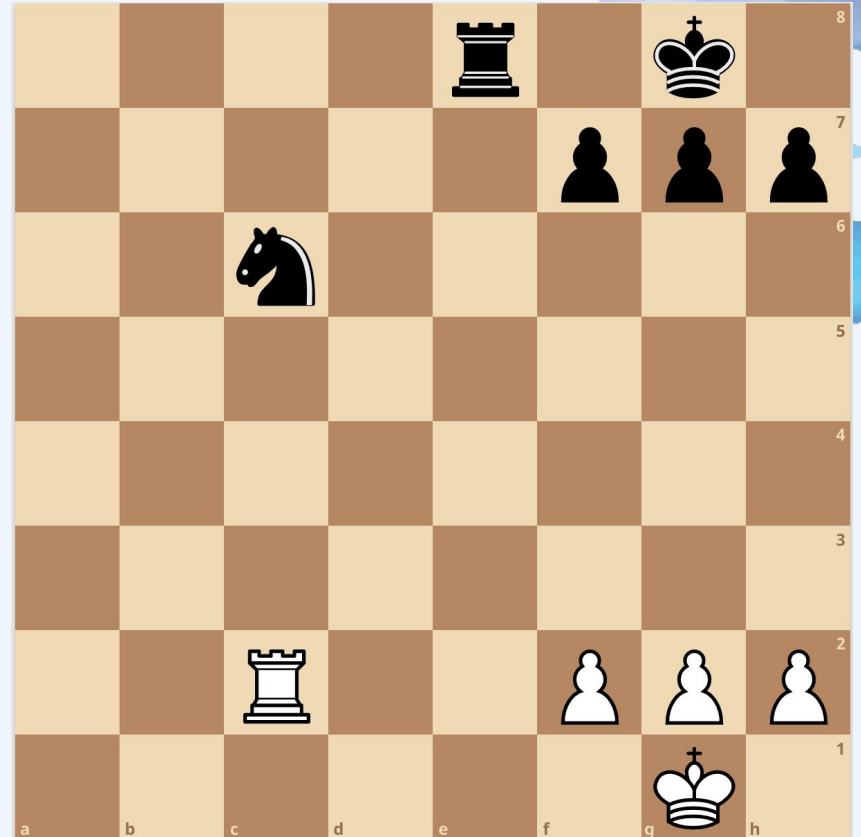
# Lecture- Back Rank Mate



# Practice

Text answers in Zoom chat either to everyone or privately to Hwan

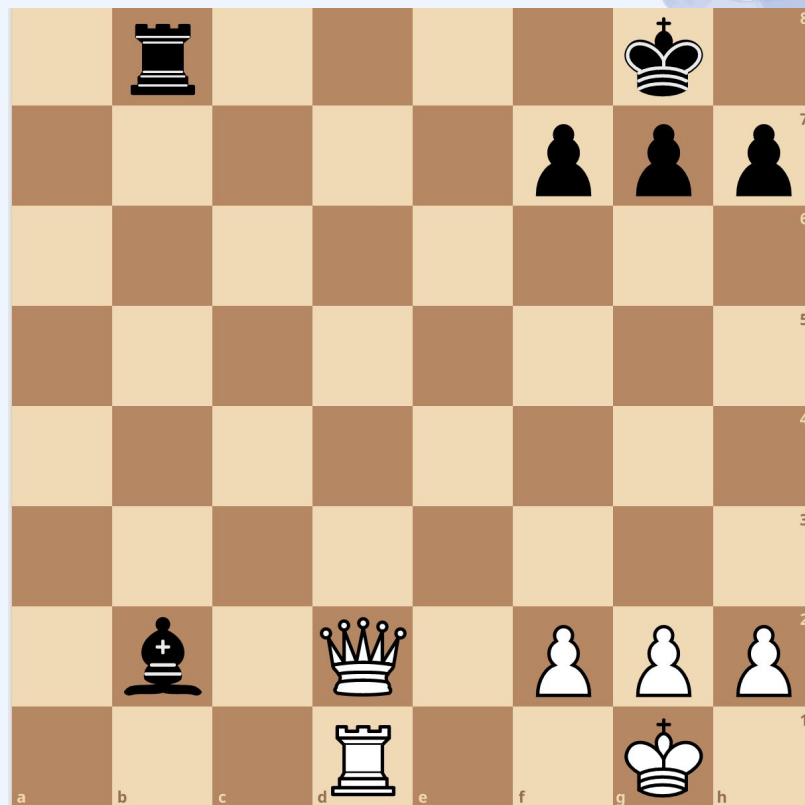
1. How can Black checkmate the White king?  
(move piece to this square)
2. If the white rook takes the black knight on c6, what is black's response?
3. How can white prevent this checkmate?



# Practice

Text answers in Zoom chat either to everyone or privately to Hwan

1. What is the first move that White can play to deliver a back-rank checkmate?
2. Can the White Queen take the bishop on b2?
3. How can black guard this checkmate?



# Chess Tourney

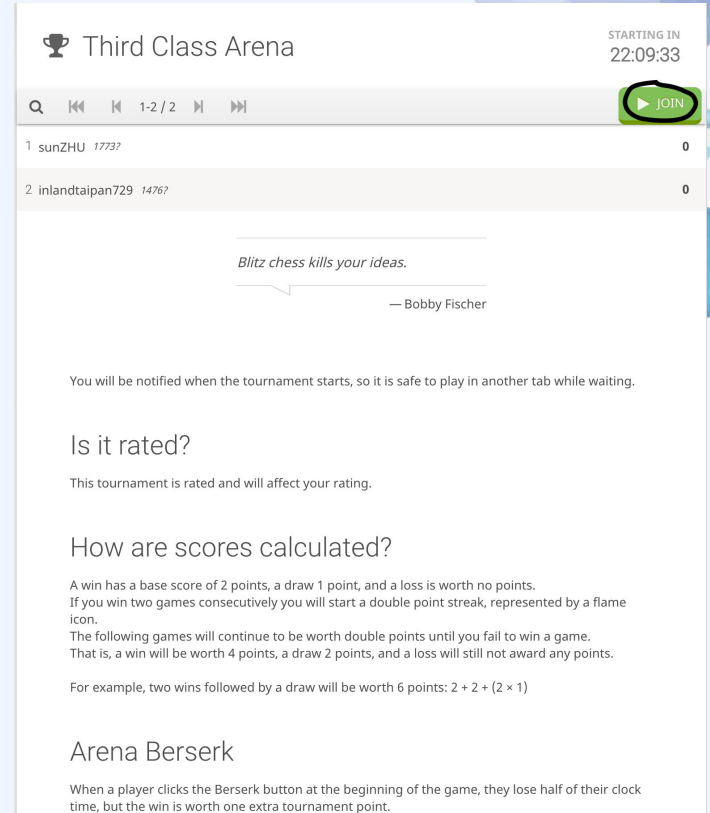
We already sent an email to join our chess tourney beforehand, but in case people don't have the link, it is

<https://lichess.org/tournament/GK83ZBuJ>

**Password: seventreesbranch**

**Note: ratings will be updated on rating sheet after this tournament**

This Link will not work if you did not join our team. The majority of our group already joined our team, but if you have not please text privately to Hwan.



The screenshot shows a Lichess tournament page for 'Third Class Arena'. At the top right, it says 'STARTING IN 22:09:33'. Below the title is a search bar and navigation icons, with a green 'JOIN' button highlighted. A table lists two players: '1 sunZHU 1773?' with a score of 0, and '2 inlandtaipan729 1476?' with a score of 0. Below the table is a quote: 'Blitz chess kills your ideas.' — Bobby Fischer. Further down, there are sections for 'You will be notified when the tournament starts...', 'Is it rated?' (with the answer 'This tournament is rated and will affect your rating.'), 'How are scores calculated?' (with a detailed explanation of point values and double point streaks), and 'Arena Berserk' (with an explanation of the Berserk mechanic).

Third Class Arena STARTING IN 22:09:33

1 sunZHU 1773? 0

2 inlandtaipan729 1476? 0

*Blitz chess kills your ideas.*

— Bobby Fischer

You will be notified when the tournament starts, so it is safe to play in another tab while waiting.

Is it rated?

This tournament is rated and will affect your rating.

How are scores calculated?

A win has a base score of 2 points, a draw 1 point, and a loss is worth no points. If you win two games consecutively you will start a double point streak, represented by a flame icon. The following games will continue to be worth double points until you fail to win a game. That is, a win will be worth 4 points, a draw 2 points, and a loss will still not award any points.

For example, two wins followed by a draw will be worth 6 points:  $2 + 2 + (2 \times 1)$

Arena Berserk

When a player clicks the Berserk button at the beginning of the game, they lose half of their clock time, but the win is worth one extra tournament point.



# Questions

**Q:** My opponent (the person I am playing against) is not moving. What should I do?

**A:** Just wait patiently and after a few minutes, the system will automatically give you the win.

**Q:** I finished my game, but the next game is not starting. What should I do?

**A:** The system is taking some time finding another player to play against. Wait a couple of minutes and eventually the system will find a player.

**Q:** What do I do when I have a question during our tournament?

**A:** To minimize any distractions for other players, please text your question in the zoom chat privately to Hwan. I will try to answer them for you.

# If time... game analysis

<https://www.chess.com/game/live/20629189147>