



Virtual Chess for Beginners

(4th Day) 2:00-3:30 PM

TABLE OF CONTENTS

01

Ice Breaker

Last half of Garry Kasparov
Video (5 min.)

02

Rating Sheet

Current Leaders (3 min.)

03

Lecture

Chess strategies: Pins &
Forks (14 min.)

04

Practice

Questions on pins & forks
(15 min.)

05

Game Analysis

TriakshaS vs. sunZHU
(10 min.)

06

Chess Tournament

Link:

<https://lichess.org/tournament/zND86fck> (45 min.)

Ice Breaker



Rating Sheet

- Updated ratings after our second tournament!
 - Our top 5 leaders are...
- JK1084 (1957)**
 - K123kbzhhd (1860)**
 - chess-jazzmine (1750)**
 - Leafeon8910 (1671)**
 - Elleni123 (1670)**

C	D	E	F
Lichess Username	Rating after 1st class (July 6th)	Rating after 2nd class (July 8th)	Rating after 3rd class (July 13th)
K123kbzhhd	2269		1860
Triaksha5	1443		1652
JK1084	2009		1957
Elleni123	1626		1670
chess-jazzmine	1911		1750
Leafeon8910	1859		1671
Kuttythangam	1563		1330
math71	1639		1583
elsa1921	1649		NS
schandramouli1	1508		1386
VibhaSanu	1614		1538
Vihaansanu	1458		1317
sas2014	1444		1470
liufangfei	1164		1200
zoe_nothing	1610		NS
Pihu1986	1572		1524
inlandtaipan729	1476		1431
ishaG	1460		NS
Sebastian_Lui55	1169		1248
ethchen628	1258		NS
sidmouli	1123		948
esperez	1500		NS
notify123	1346		NS
Wanderwoman2021	1132		NS
Blebletomato	1258		NS
jesse0116	1258		NS
yueen123	965		722
mas622	1071		1107
greenroseblue	1032		1151
Vaibob21	NS		1648
jomart79	NS		1539
anishyenuguthala	NS		1514
mousedroid	NS		1226

Lecture- Pins



Pin= When a piece is stuck because there is a more valuable piece behind it.

Absolute pin= The piece is pinned to a king

Relative pin= The piece is pinned to another piece other than the king.

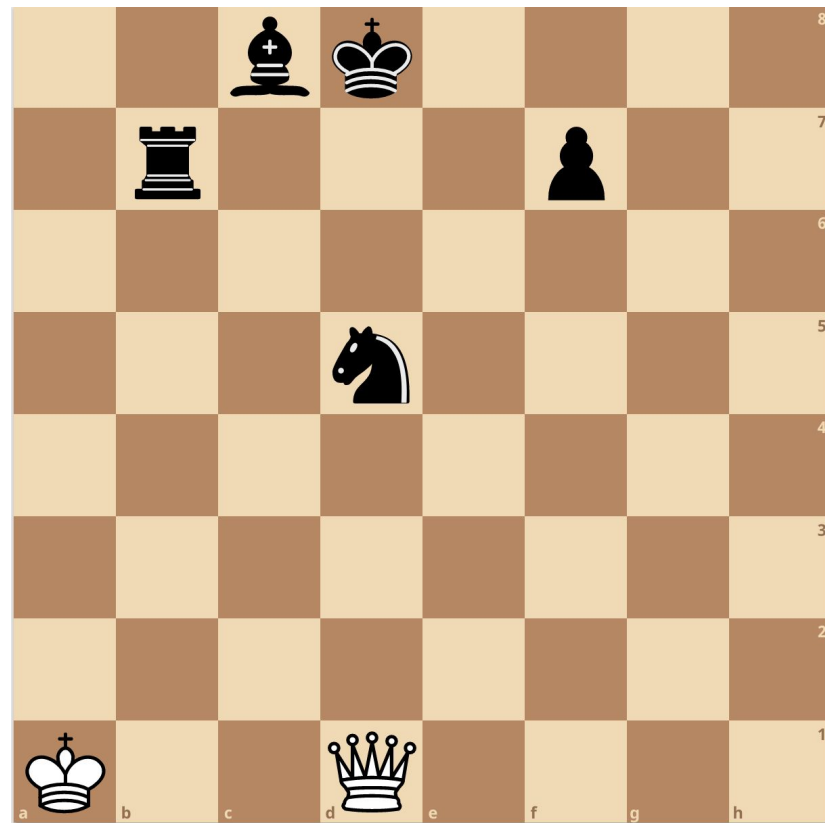
Practice

Text answers in Zoom chat either to everyone or privately to Hwan

1. What black piece is pinned to the black king?
2. Is this pin an absolute pin or a relative pin?
3. How can black get out of this pin?

Answers:

1. The knight is pinned to the black king. The knight cannot move because it would put the king in check.
2. This pin is an absolute pin because the knight is pinned to the king.
3. Black can get out of this pin by moving his rook on b7 to d7. The knight is then free to move.



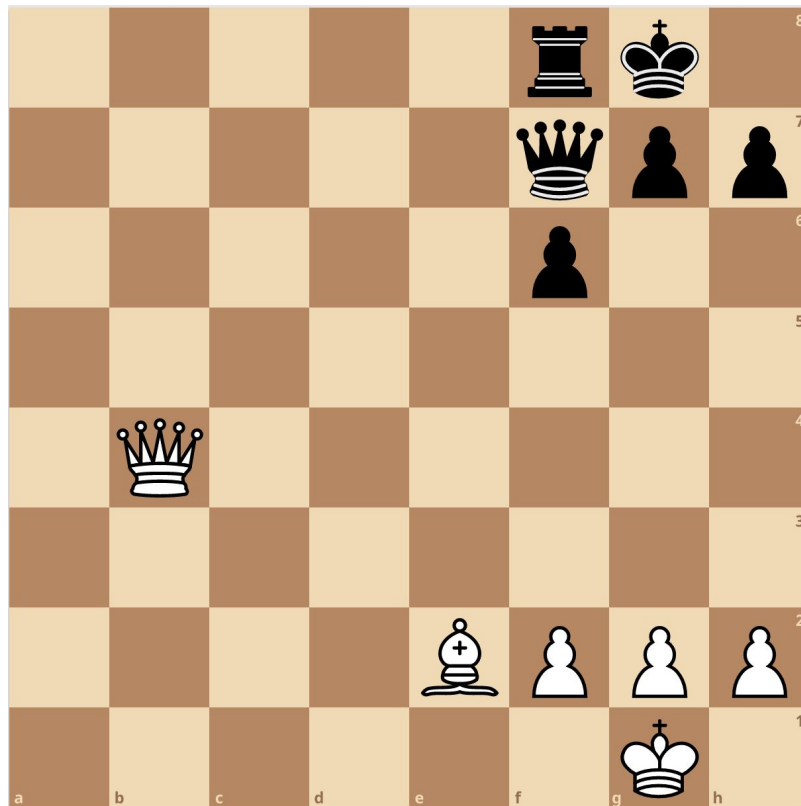
Practice

Text answers in Zoom chat either to everyone or privately to Hwan

1. How many points of material does White have?
2. How many points of material does Black have?
3. What is the special move White can play to be winning?

Answers:

1. Pawn= 1 point Queen= 9 point Rook=5 point, so 17 points
2. Bishop= 3 points, so 15 points
3. Bishop C4! The queen is absolutely pinned to the king! You will win the queen the next move



Lecture- Forks

Fork/double attack: When one piece (mostly a knight or pawn) is attacking two pieces at once



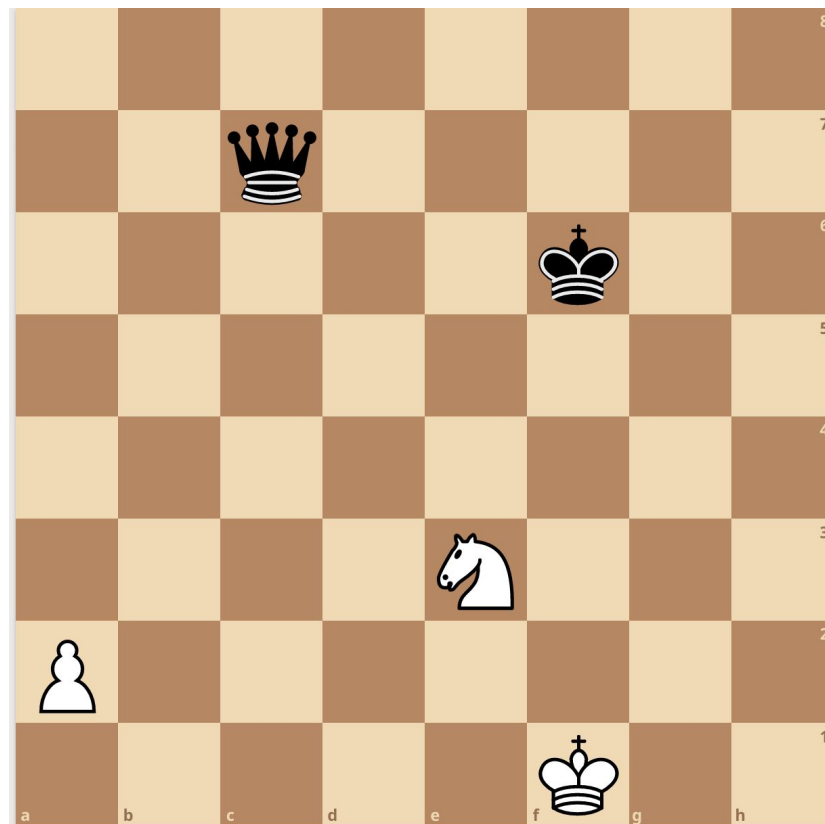
Practice

Text answers in Zoom chat either to everyone or privately to Hwan

1. How many points of material does White have?
2. How many points of material does Black have?
3. What is the fork White can play to be winning?

Answers:

1. 4 points
2. 9 points
3. Knight to d5!! It forks both the king and queen. After the king moves, the knight takes the queen.



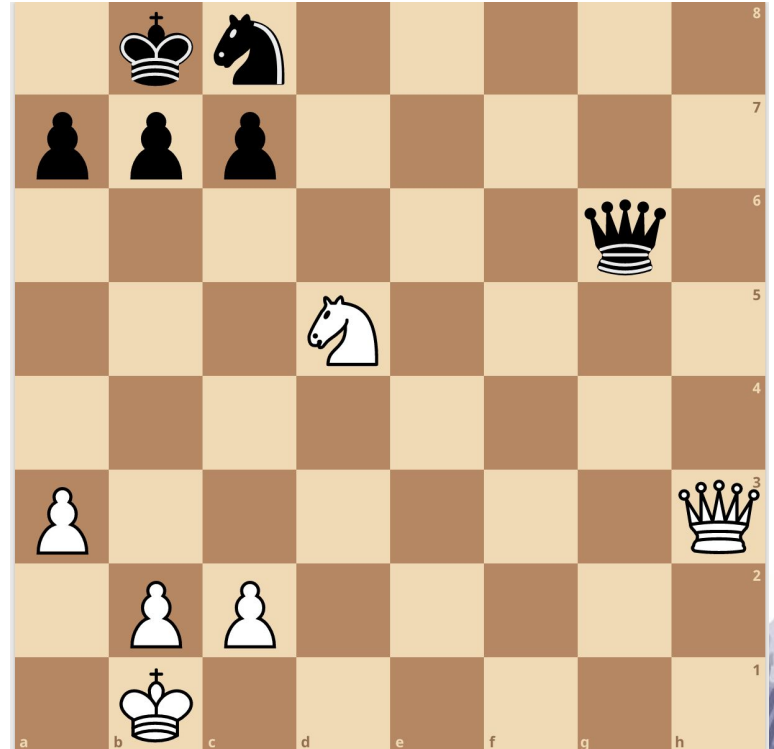
Practice (advanced)

This puzzle is more advanced because it involves another tactic: sacrificing.

There is a combination of moves white can play to be up in material. Can you find it?

Answer

- **Queen takes black knight on c8!
After king takes, white knight
moves to e7 forking the king and
queen.**



Chess Analysis

<https://lichess.org/V2OZjNX4/black>

Tournament

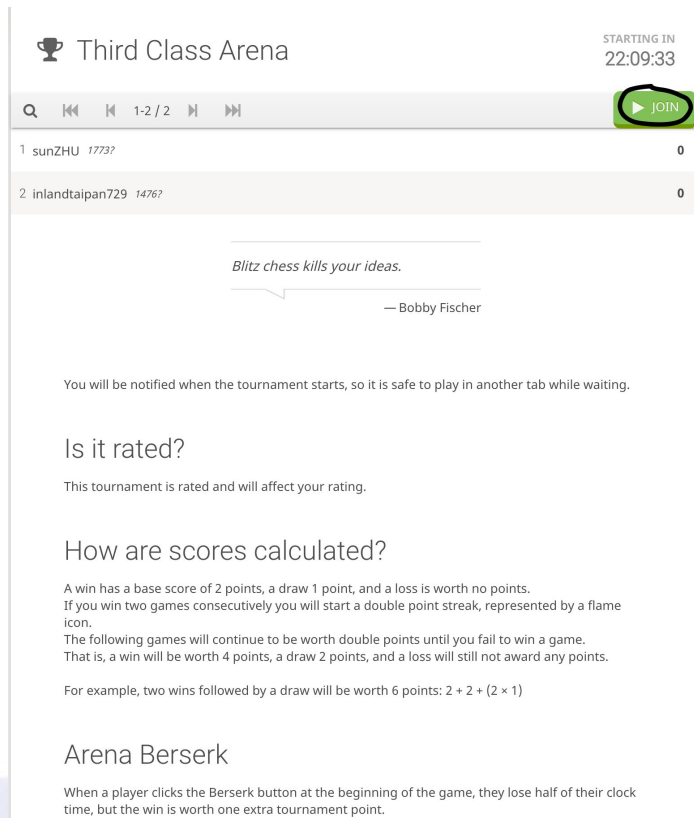
We already sent an email to join our chess tourney beforehand, but in case people don't have the link, it is

<https://lichess.org/tournament/zND86fck>

Password: seventreesbranch

Note: ratings will be updated on rating sheet after this tournament

This Link will not work if you did not join our team. The majority of our group already joined our team, but if you have not please text privately to Hwan.



Third Class Arena

STARTING IN 22:09:33

1-2 / 2

1 sunZHU 1773? 0

2 inlandtaipan729 1476? 0

Blitz chess kills your ideas.

— Bobby Fischer

You will be notified when the tournament starts, so it is safe to play in another tab while waiting.

Is it rated?

This tournament is rated and will affect your rating.

How are scores calculated?

A win has a base score of 2 points, a draw 1 point, and a loss is worth no points. If you win two games consecutively you will start a double point streak, represented by a flame icon. The following games will continue to be worth double points until you fail to win a game. That is, a win will be worth 4 points, a draw 2 points, and a loss will still not award any points.

For example, two wins followed by a draw will be worth 6 points: $2 + 2 + (2 \times 1)$

Arena Berserk

When a player clicks the Berserk button at the beginning of the game, they lose half of their clock time, but the win is worth one extra tournament point.